

LOFRIC[®]

The leading low-friction catheter.
Extraordinary water retention properties.





Simply superior. The low-friction solution.

Offering you the best protection

The coating on LoFric catheters are made up of two properties - a hydrophilic surface layer, consisting of a low friction layer of water, and a sodium chloride (salt) surface layer that is adapted to the urethra's concentration of salt and other soluble matter. This combination on the surface of the LoFric catheters has a great ability to bind water. The result is a very wet and slippery surface that provides up to 95% lower friction compared with other catheters. So LoFric not only has low friction when inserted, but also when removed. For you, it means reduced risk of urinary tract infections and long-term urethral complications.

Clinically proven

LoFric is the most clinically proven and well documented intermittent catheter in the world - over 20 years of clinical studies. These studies demonstrate significant medical benefits superior to other catheters, especially to conventional catheters used with gel.



LOFRIC® PRODUCT RANGE

TYPE	LENGTH	SIZE
LoFric, Male	16", straight tip	8FR - 24FR
LoFric, Male	16", coudé tip	10FR - 18FR
LoFric, Female	8", straight tip	8FR - 18FR
LoFric, Female	6", straight tip	8FR - 14FR
LoFric, Adolescent	12", straight tip	6FR - 10FR
LoFric, Pediatric	8", straight tip	6FR - 10FR

LOFRIC® PLUS PRODUCT RANGE

TYPE	LENGTH	SIZE
LoFric Plus, Male	16", straight tip	8FR - 24FR
LoFric Plus, Female	8", straight tip	8FR - 18FR
LoFric Plus, Female	6", straight tip	8FR - 18FR
LoFric Plus, Adolescent	12", straight tip	6FR - 10FR
LoFric Plus, Pediatric	8", straight tip	6FR - 10FR

THE WORLD'S MOST WIDELY USED HYDROPHILIC CATHETER

Funnel end.
Has different colors depending on the diameter of the catheter.
The diameter is measured in french size, such as 14 FR.



LoFric® Catheter.
Unique hydrophilic low friction design minimizes the risk of discomfort and complications.

Drainage eyes.
The side holes where the urine runs out.



Catheter tip.
In two different types: rounded (straight) and curved (coudé).



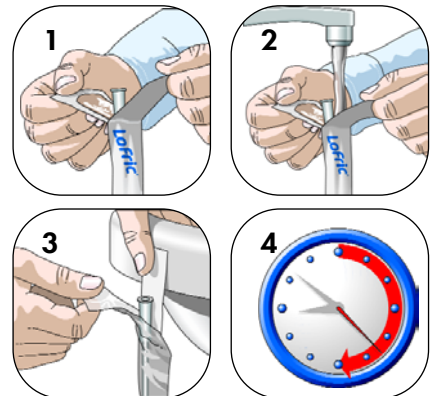
Coudé tip.

Also available, LoFric Plus.
Same clinical benefits as classic LoFric.

Made from a more gentle, pliable material. If you are accustomed to using red rubber, LoFric Plus is a more flexible catheter.



Directions for Use:



1. Peel open the top of the package about 2 inches.
2. Fill the package with water until the water line is about an inch below the colored funnel.
3. Remove the blue patch at the top of the package and attach the pack to a dry surface.
4. Allow the catheter to soak for at least 30 seconds, then catheterize.

LoFric is designed for one-time use only. After a single use, the hydrophilic coating is not assured to hold its lubricating water layer on inside the urethra. This may cause injury to the urethra and /or increase the risk of infection.

Knowledge, education and support

If you need additional information, we have comprehensive knowledge in all the areas associated with catheterization, dilatation, and instillation. We are willing to act as a resource, or to provide education.

When it comes to education and information, we have a broad program. You may use our training and information on video, in print, or on the Astra Tech website. Apart from that, we have information on products, clinical studies, user guides, starter kits, and much more. Contact us for all your needs.

77788-US-0504

